



Eagle M25 RAPISCAN

MOBILE CARGO AND VEHICLE
SCREENING SYSTEM

- HIGH-QUALITY IMAGING WITH MATERIAL DISCRIMINATION
- MULTIPLE SCAN MODES FOR MAXIMUM FLEXIBILITY
- SMALL EXCLUSION ZONE FOR DEPLOYMENT IN SPACE-CONSTRAINED AREAS
- INTEGRATED CAB DESIGN FOR OPERATOR COMFORT AND EFFICIENCY

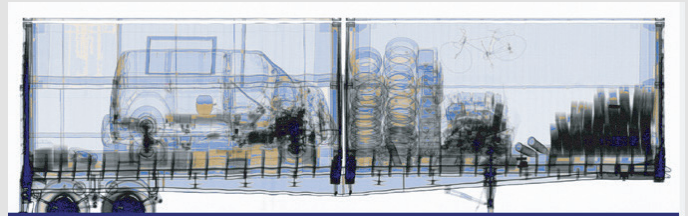
The Rapiscan Eagle M25 can scan stationary cargo or vehicles driven through the X-ray tunnel with automatic cab exclusion or CabScan® mode to image the entire vehicle. The system offers best-in-class, three-color material discrimination for improved detection of threats and contraband. The system itself, along with the associated radiation controlled zone, is smaller than typical high-energy mobile systems, allowing operators to set up scanning areas at congested seaports and land border crossings. The M25 also features an integrated cab design allowing the driver and operators to be colocated in the same spacious cabin for improved comfort and ease of communications. The system is easily driven over public roads and quickly deployed after arriving on site.

HEALTH AND SAFETY

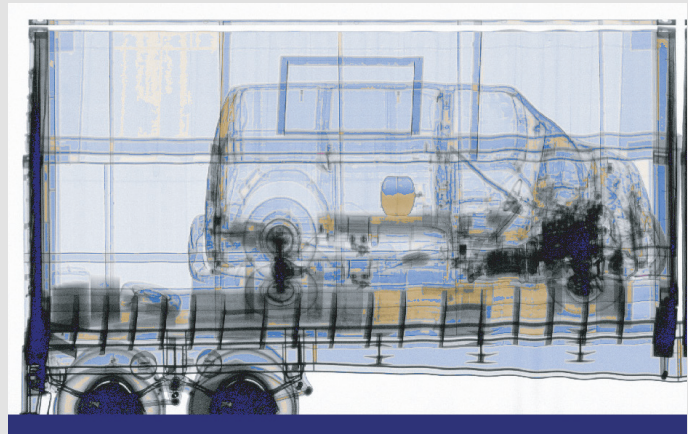
- **Open radiation exclusion zone (in drive-by mode; 20 trucks per hour)**
18 m x 36 m (59 ft x 118 ft)
- **Radiation dose at exclusion zone boundary**
*0.5 μ Sv in any one hour
- **Radiation dose to driver (in portal mode)**
< 0.25 μ Sv per scan
- **Radiation dose to crew**
0.5 μ Sv in any one hour (20 scans/hr)
- **Radiation dose to cargo**
1 μ Sv per scan



THE RAPISCAN EAGLE M25 OFFERS HIGH-QUALITY DETECTION CAPABILITIES IN A COMPACT, ROBUST, MOBILE CONFIGURATION DESIGNED FOR CUSTOMS CLEARANCE AT PORTS AND BORDERS, AND SECURITY CHECKPOINT APPLICATIONS



Full scan transmission X-ray



Enlarged section



Eagle M25 RAPISCAN



TYPICAL DRIVE-BY PERFORMANCE

Steel penetration	205 mm
Wire resolution	2 mm

OPERATING FEATURES

X ray	2.5 MeV
Crew	Minimum of two operators (driver and analyst); ground guide and additional analysts optional
Scan modes	Drive-by with optional portal and CabScan modes
Scan direction	Bi-directional in drive-by mode
Scanning speed	15, 0.25, 0.38 m/s in drive-by; up to 6 km/hr in portal mode
System throughput	Up to 80 trucks per hour in portal mode
Set-up time	20 min in standard operating environment
Shore power requirements (option)	50 Hz: 400 V, 63 A, 44 kVA 60 Hz: 220 V, 125 A, 48 kVA

SYSTEM DIMENSIONS AND SPECIFICATIONS

Chassis	
Navistar	Workstar chassis with crew cab

STOWED DIMENSIONS

Length	9 m
Width	2.6 m
Height	4.0 m

DEPLOYED DIMENSIONS

Length	9 m
Width	7.3 m
Height	5.8 m

MAXIMUM SCANNED OBJECT DIMENSIONS

Width	2.8 m
Height	4.8 m
Minimum scan height	0.3 m from ground

ENVIRONMENT

Operating temperature	-30° C to 50° C
Maximum wind speed	40 km/h

SYSTEM OPTIONS

- **Portal mode** : supports the drive-through scanning of traffic. Requires the purchase of traffic control and monitoring devices
- **CabScan mode** : while in portal mode, safely scans the cab of the truck from front bumper to start of cargo
- **Integrated peripheral devices**: license/number plate recognition system, container code recognition system, and manifest scanner
- **Extreme cold weather package** : extends the system operating temperature to -40° C
- **Extreme hot weather package** : extends the system operating temperature to +55° C

HTDS

Parc d'Activités du Moulin de Massy - 3 rue du Saule Trapu
BP246 - 91882 Massy Cedex France

Tel : +33 (0) 1 64 86 28 28 - Fax : +33 (0) 1 69 07 69 54 - info@htds.fr - www.htds.fr

HTDS Algeria: +213 232 384 01/02

HTDS Morocco: +212 222 749 59

HTDS Egypt: +202 229 053 06

HTDS Lybia: +218 91 69 50 70 8

HTDS Madagascar: +261 34 40 664 72

HTDS Tunisia: +216 70 836 961