



Eagle M60 RAPISCAN

HIGH-ENERGY MOBILE INSPECTION SYSTEM

- HIGH-QUALITY IMAGING WITH MATERIAL DISCRIMINATION
- MULTIPLE SCAN MODES FOR MAXIMUM FLEXIBILITY
- SCANS 5 M TALL OBJECTS

The system scans stationary cargo in drive-by mode and can also scan vehicles driven through the X-ray tunnel, either with automatic cab exclusion or using CabScan® mode to image the entire vehicle. In driverless mode, operators can scan vehicles without requiring a driver, reducing operating costs.

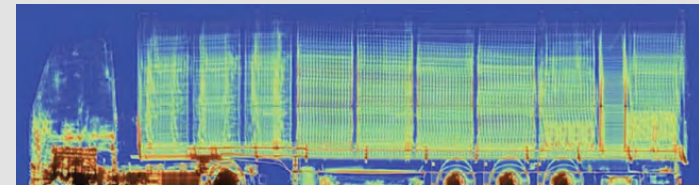
The system's high-performance transmission imaging offers penetration of up to 330 mm steel with 3- or 4-color material discrimination for improved detection of threats and contraband. The Eagle M60 scans cargo and vehicles up to 5 meters in height and 2.8 meters in width without corner cutoff. The system is easily driven over public roads and quickly deployed after arriving on site.

HEALTH AND SAFETY

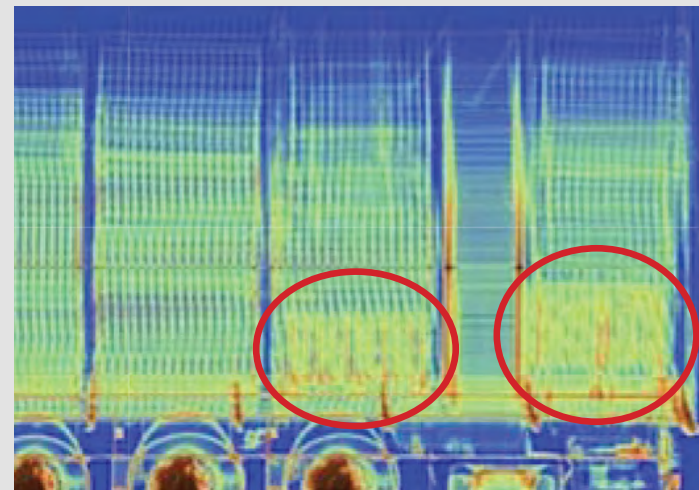
- **Open radiation exclusion zone (in drive-by mode ; 25 trucks per hour)**
50 m x 40 m
- **Radiation dose at exclusion zone boundary :**
0.5 µSv in any one hour
- **Radiation dose to driver (in portal mode) :**
Less than 0.25 µSv per scan
- **Radiation dose to crew :**
0.5 µSv in any one hour
- **Radiation dose to cargo :**
Less than 20 µSv per scan



THE RAPISCAN EAGLE M60 IS A HIGH-ENERGY MOBILE INSPECTION SYSTEM DESIGNED WITH MULTIPLE OPERATIONAL MODES FOR MAXIMUM FLEXIBILITY AS INSPECTION NEEDS CHANGE



Full scan transmission X-ray



Enlarged section



Eagle M60

RAPISCAN

OPERATING FEATURES

	M60-S	M60-T	M60-R
Steel penetration	310 mm	mm 330	320 mm
Wire resolution	1.2 mm	1.2 mm	0.8 mm
Spatial resolution	4 mm (H) 4 mm (V)	4 mm (H) 4 mm (V)	3 mm (H) 3 mm (V)
X-ray source	6 MeV		
Crew	Minimum of two operators (driver and analyst); ground guide and additional analysts optional		
Scan modes	Drive-by with optional portal and CabScan modes		
Scan direction	Bi-directional in drive-by mode		
Scanning speed	0.13, 0.26, 0.4 m/s in drive-by; 3-8 km/hr in portal mode		
System throughput	Up to 80 trucks per hour in portal mode		
Set-up time	20 min in standard operating environment		
Shore power requirements (option)	50 Hz: 400 V, 63 A, 44 kVA 60 Hz: 220 V, 125 A, 48 kVA		

SYSTEM DIMENSIONS AND SPECIFICATIONS

Chassis	
Mercedes-Benz® Truck	As determined by country homologation

STOWED DIMENSIONS

Length	11.1 m
Width	2.5 m
Height	4.0 m

DEPLOYED DIMENSIONS

Length	11.1 m
Width	7.6 m
Height	5.8 m

MAXIMUM SCANNED OBJECT DIMENSIONS

Width	2.8 m
Height	5.0 m
Minimum scan height	0.4 m

ENVIRONMENT

Operating temperature	-10° C to 40° C
Maximum wind speed	40 km/h

HTDS

Parc d'Activités du Moulin de Massy - 3 rue du Saule Trapu
BP246 - 91882 Massy Cedex France

Tel : +33 (0) 1 64 86 28 28 - Fax : +33 (0) 1 69 07 69 54 - info@htds.fr - www.htds.fr

HTDS Algeria: +213 232 384 01/02

HTDS Morocco: +212 222 749 59

HTDS Egypt: +202 229 053 06

HTDS Lybia: +218 91 69 50 70 8

HTDS Madagascar: +261 326 170 443

HTDS Tunisia: +216 70 836 961



SYSTEM OPTIONS

- **Portal mode** : supports the drive-through scanning of traffic. Requires the purchase of traffic control and monitoring devices
- **Cabscan mode** : while in portal mode, safely scans the cab of the truck from front bumper to start of cargo
- **Driverless mode** : system scans vehicles by autonomously moving between start and stop markers
- **Integrated radiation detection** : gamma or gamma/neutron
- **Integrated peripheral devices** : license/number plate recognition system and container code recognition system
- **Extreme cold weather package** : extends the system operating temperature to -40° C
- **Extreme hot weather package** : extends the system operating temperature to +55° C
- **Car scanning ramp** : stowed on board