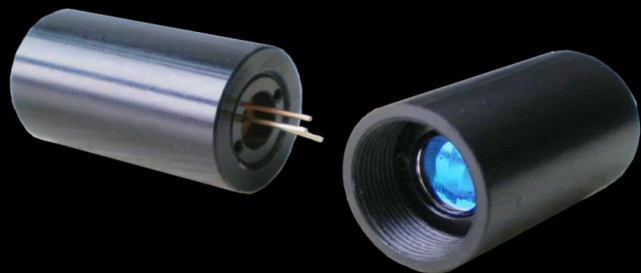


# CATALOG

## Collimated Laser Diode





**WAVESPECTRUM GROUP** was founded in 1999. It is comprised by a group of experienced and innovative experts in the fields of laser physics, materials science, electronic technology and mechanical design. It has established solid cooperation with some famous universities, research institutes and laboratories.

Wavespectrum products are widely used in space science, optical communication technology, laser display, laser medical, life sciences and materials processing. With the rapid development, R&D centers and production bases have been established in China and Europe. The current plant area is 4,000 square meters, including 2,000 square meters of Class 1,000 clean workshops.

Wavespectrum products include laser diodes, fiber-coupled laser modules and fiber-coupled laser systems with wavelengths from 405nm to 1920nm. Our products are used in medical, printing, laser display, life science, laser communication and other fields. At present, the products have all passed the certifications of ROHS, REACH, CE, etc. At the same time, we have got ISO90001 quality management system certification.

Wavespectrum has world-class R&D team, and it has the world first-class production processing plants. Our products can meet the military-grade production and design standards. The products are well acclaimed world-wide, such in Germany, Austria, the United States, Japan, South Korea and other parts of the world. We have established close cooperation with a number of well-known enterprises world-wide.

**Wavespectrum offers laser products with wavelength ranges from 405nm to 1920nm.**

405nm	445nm	465nm	488nm	505nm	515nm	520nm	525nm	635nm	650nm	660nm	670nm	680nm
685nm	760nm	785nm	790nm	808nm	830nm	850nm	860nm	880nm	905nm	915nm	940nm	980nm
1064nm	1210nm	1270nm	1280nm	1290nm	1310nm	1330nm	1350nm	1370nm	1390nm	1410nm	1430nm	1450nm
1470nm	1490nm	1510nm	1530nm	1550nm	1570nm	1590nm	1610nm	1625nm	1650nm	1720nm	1900nm	1920nm

**CONTACT US**

**Wavespectrum Laser Group Limited**

Address : 2-2-1504, 2# Haitai Innovation 6th Road, Xiqing Dist, 300392, TianJin, China

Web : [www.wavespectrum-laser.com.cn](http://www.wavespectrum-laser.com.cn) Email : [sales@wavespectrum-laser.com.cn](mailto:sales@wavespectrum-laser.com.cn)

Tel : 86-022-87931118 Fax : 86-022-86392109

**Distributors Wanted World-Wide!**

# PRODUCT CONTENTS

Single Mode Fiber  
Coupled Laser Diode



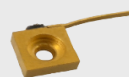
Multi-mode Fiber Coupled  
Laser Module



Single Mode Laser Diode



Multi-mode Laser Diode



Collimated Laser Diode



Turnkey Fiber Coupled  
Diode Laser System



OEM Fiber Coupled Diode  
Laser System



Fiber Receptacle Laser  
Module



405nm High Power Fiber  
Coupled Laser Source



405nm Fiber Receptacle  
Laser Module



Red & Green Aiming Beam  
for Fiber Laser



Triplex (RGB) Fiber Coupled  
White Laser Module



Triplex (RGB) Fiber Coupled  
White Laser System



3-wavelength (Multi-  
wavelength) Fiber Coupled  
Laser System



3-channel (Multi-channel)  
Fiber Coupled Laser System



Multi-wavelength Fiber  
Coupled Laser Module



High Power Fiber  
Bundled Laser Module



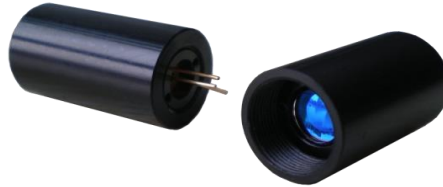
Photodiode



## Collimated Laser Diode

### PRODUCT FEATURE

405nm~1650nm  
 Single mode and Multi-mode Beam Output  
 5mW~5W Output Power  
 Compact Package  
 Built-in Photodiode Optional  
 Long Lifetime  
 High Stability



### PRODUCT OVERVIEW

Collimated Laser Diode is the competitive product of WAVESPECTRUM.

We offer the high quality Collimated Laser Diode with Single mode and Multi-mode Beam. The wavelength ranges from 405nm to 1650nm and the output power is from 5mW to 5W. The Photodiode is an option for customers. Meanwhile, with the Aspheric lens, the collimated Laser Diode has a small divergence and perfect beam quality.

To ensure the long-term reliability, each Collimated laser diode will undergo rigorous testing and aging in factory. Meanwhile the high-low storage temperature circulation is also necessary for each laser diode. We set the storage temperature range from -40°C to +85°C, and it lasts 10 cycles, which will ensure the long-term Stability of Collimated Laser Diode.



Wavelength	Part Number	Output Power	Mode Type	Photodiodes	Beam Divergence
405nm	WSLM-405-150m-K	150mW	Single Mode	×	≤1mrad
	WSLM-405-200m-K	200mW	Single Mode	×	≤1mrad
	WSLM-405-250m-K	250mW	Single Mode	×	≤1mrad
445nm	WSLM-445-050m-K	50mW	Single Mode	×	≤1mrad
	WSLM-445-080m-K	80mW	Single Mode	×	≤1mrad
488nm	WSLM-488-040m-K	40mW	Single Mode	×	≤1mrad
505nm	WSLM-505-050m-K	50mW	Single Mode	×	≤1mrad
520nm	WSLM-520-050m-K	50mW	Single Mode	×	≤1mrad
635nm	WSLM-635-010m-K	10mW	Single Mode	√	≤1mrad
	WSLM-635-040m-K	40mW	Single Mode	√	≤1mrad
	WSLM-635-150m-K	150mW	Single Mode	×	≤1mrad
	WSLM-635-500m-K	500mW	Multi-mode	×	≤10mrad
	WSLM-635-001-K	1W	Multi-mode	×	≤10mrad
658nm	WSLM-650-040m-K	40mW	Single Mode	√	≤1mrad
	WSLM-650-100m-K	100mW	Single Mode	×	≤1mrad
	WSLM-650-150m-K	150mW	Single Mode	×	≤1mrad
670nm	WSLM-670-010m-K	10mW	Single Mode	√	≤1mrad
685nm	WSLM-685-030m-K	30mW	Single Mode	√	≤1mrad
	WSLM-685-050m-K	50mW	Single Mode	√	≤1mrad
785nm	WSLM-785-015m-K	15mW	Single Mode	√	≤1mrad
	WSLM-785-050m-K	50mW	Single Mode	√	≤1mrad
	WSLM-785-080m-K	80mW	Single Mode	√	≤1mrad
808nm	WSLM-808-050m-K	50mW	Single Mode	√	≤1mrad
	WSLM-808-100m-K	100mW	Single Mode	√	≤1mrad
	WSLM-808-800m-K	800mW	Multi Mode	○	≤10mrad
830nm	WSLM-830-150m-K	150mW	Single Mode	√	≤1mrad
	WSLM-830-200m-K	200mW	Single Mode	√	≤1mrad
	WSLM-830-800m-K	800mW	Multimode	○	≤10mrad
850nm	WSLM-850-030m-K	30mW	Single Mode	√	≤1mrad
	WSLM-850-150m-K	150mW	Single Mode	√	≤1mrad
860nm	WSLM-860-800m-K	800mW	Multimode	○	≤10mrad
880nm	WSLM-880-005m-K	5mW	Single Mode	√	≤1mrad
905nm	WSLM-905-080m-K	80mW	Single Mode	√	≤1mrad
940nm	WSLM-940-150m-K	150mW	Single Mode	√	≤1mrad
	WSLM-940-800m-K	800mW	Multimode	○	≤10mrad
980nm	WSLM-980-030m-K	30mW	Single Mode	√	≤1mrad
	WSLM-980-080m-K	80mW	Single Mode	√	≤1mrad
	WSLM-980-800m-K	800mW	Multimode	○	≤10mrad
1064nm	WSLM-1064-040m-K	40mW	Single Mode	√	≤1mrad
	WSLM-1064-100m-K	100mW	Single Mode	√	≤1mrad

Note: √:Yes, ○:Optional, ×:No.

Wavelength	Part Number	Output Power	Mode Type	Photodiodes	Beam Divergence
1064nm	WSLM-1064-150m-K	150mW	Single Mode	√	≤1mrad
1310nm	WSLM-1310-015m-K	15mW	Single Mode	√	≤1mrad
	WSLM-1310-020m-K	20mW	Single Mode	√	≤1mrad
1550nm	WSLM-1550-010m-K	10mW	Single Mode	√	≤1mrad
	WSLM-1550-015m-K	15mW	Single Mode	√	≤1mrad

Note: √:Yes, ○:Optional, ×:No.

Package View :

