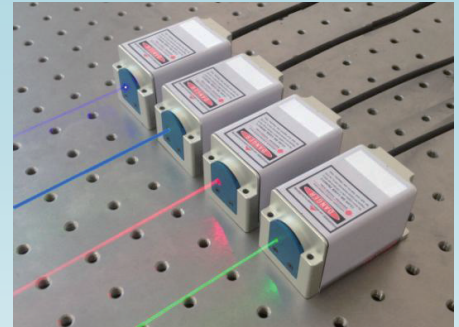


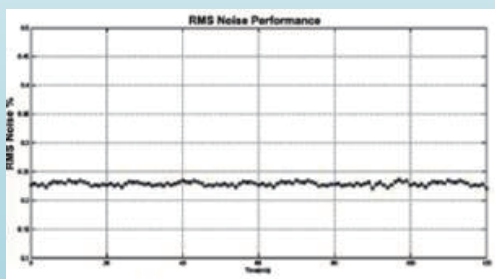
Diode XS series lasers

MDL-XS laser series, features with integrated electronics, miniaturization, plug and play, standardization of interface advantages of continuous solid-state lasers. It is the ideal solution for a wide range of applications including life sciences, environmental monitoring, inspection and machine vision. Housed in compact packages, are the perfect choice for design in and integration into OEM instrumentation and systems and also for end user applications in research and development.

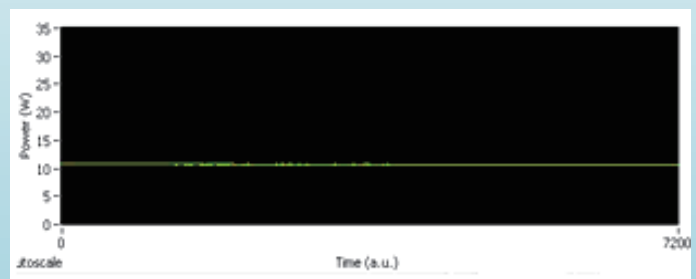


Wavelength (nm)	Model	Output power (mW)
375	MDL-XS-375	1~50
405	MDL-XS-405	1~200
450	MDL-XS-450	1~30
488	MDL-XS-488	1~50
520	MDL-XS-520	1~50
637	MDL-XS-637	1~100
642	MDL-XS-642	1~100
650	MDL-XS-650	1~80
655	MDL-XS-655	1~80
660	MDL-XS-660	1~80
785	MDL-XS-785	1~80
808	MDL-XS-808	1~80
915	MDL-XS-915	1~100
940	MDL-XS-940	1~100

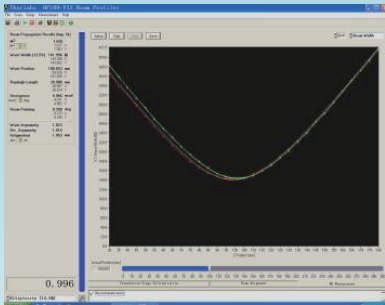
▼ Features of MDL-S series lasers:



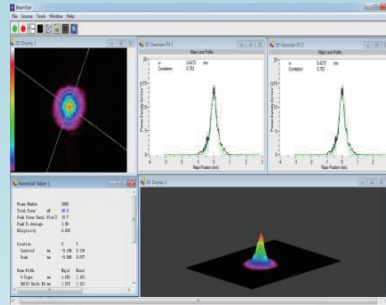
Rms noise <0.5%



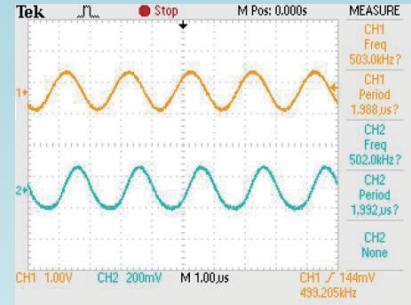
Long term output power stability



M² measurement <1.2



Beam profile testing



Modulation waveform

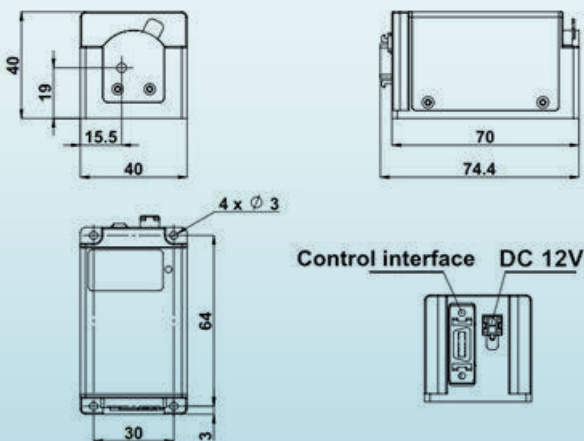
▼ Customized solutions:

- Fiber coupling
- External AOM
- Mechanical shutter
- Drive mode

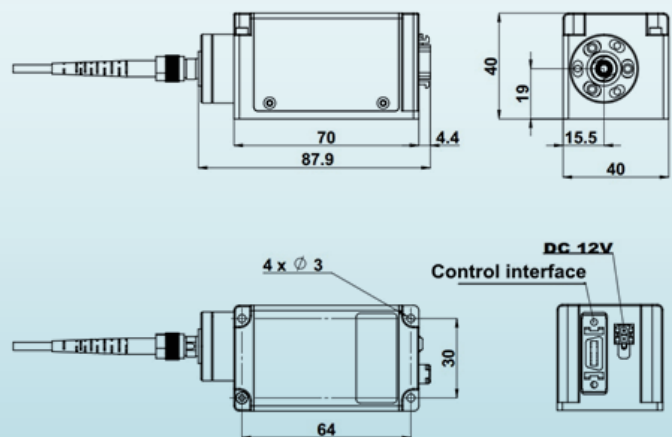
Other customized works available on request.



▼ Dimensions of Laser head (mm):



74.4 (L) × 40 (W) × 40 (H) mm³, 0.2 kg
MDL-XS (Before fiber)



87.9 (L) × 40 (W) × 40 (H) mm³
MDL-XS (After fiber)