



OMNIVIEW GANTRY AS&E

HIGH-ENERGY CARGO AND VEHICLE
INSPECTION SYSTEM

- SUPERIOR IMAGING PERFORMANCE WITH STEEL PENETRATION OF UP TO 400 MM AND 0.8 MM WIRE RESOLUTION
- FOUR-COLOR MATERIAL DISCRIMINATION
- LARGE SCAN TUNNEL

The bi-directional inspection system scans up to 28 trucks per hour. Ideal for contraband and threat detection and manifest verification at ports, borders, military bases, and security checkpoints, the OmniView Gantry can inspect even the most densely loaded containers.

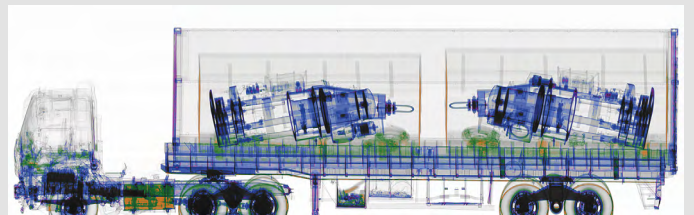
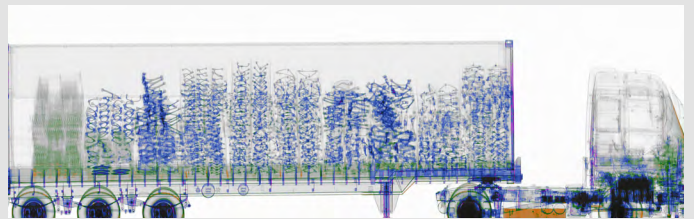
Its unique design minimizes X-ray scatter in order to create a best-in-class, high-resolution X-ray image. The OmniView Gantry system offers material discrimination with four color categories: organics in orange, non-organics in green, metallics in blue, and heavy metals in purple. The large scan tunnel accommodates vehicles up to 5 meters tall.

HEALTH AND SAFETY

- **Shielded radiation exclusion zone (15 trucks per hour)**
48.5 m x 14.1 m
- **Radiation dose at exclusion zone boundary**
0.5 μ Sv in any one hour
- **Radiation dose to crew**
Less than 0.5 μ Sv in any one hour
- **Radiation dose to cargo**
Less than 30 μ Sv/scan (3 mR) at 0.4 m/s



AS&E'S OMNIVIEW® GANTRY FEATURES POWERFUL 6 MEV TRANSMISSION X-RAYS THAT PENETRATE UP TO 400 MM (15.7 IN) OF STEEL. THE SYSTEM OPERATES BY MOVING ON RAILS PAST STATIONARY VEHICLES AND CARGO.



Dual-energy transmission images with material discrimination



OMNIVIEW GANTRY AS&E



PERFORMANCE

| | |
|------------------------------|----------------------------|
| High-energy mode penetration | 400 mm of steel at 0.2 m/s |
| Dual-energy mode penetration | 380 mm of steel at 0.2 m/s |
| Wire resolution | 0.8 mm wire in air |

OPERATING FEATURES

| | |
|--------------------|---|
| X-ray source | 6 Mev |
| Crew | Scan coordinator and image analyst |
| Scan speed | 0.2, 0.3, 0.4 m/s (8, 12, 16 in/s) |
| Throughput | 28 trucks per hour, using 54.86 m of rail and two trucks per scan |
| Power requirements | 50 Hz: 400 V, 90 A, 50 kVA |
| | 60 Hz: 480 V, 80 A, 50 kVA |

SYSTEM DIMENSIONS AND SPECIFICATIONS

| | |
|--------|--------|
| Width | 11.1 m |
| Height | 7.7 m |
| Length | 5.3 m |

TUNNEL DIMENSIONS

| | |
|----------------|---|
| Width | 3.6 m |
| Height | 5.1 m |
| Length options | 37 m rails: Scan object(s) up to 19 m in length |
| | 55 m rails: Scan object(s) up to 38 m in length |

MAXIMUM VEHICLE DIMENSIONS

| | |
|---------------------------|-----|
| Width (between rub rails) | 3 m |
| Height | 5 m |

ENVIRONMENT

| | |
|-----------------------|--|
| Operating temperature | -18° C to 55° C |
| Enclosed facility | System is designed to be deployed in an enclosed facility to reduce the size of the radiation controlled zone and for other environmental conditions |

SYSTEM OPTIONS

- **Integrated peripheral devices** : license/number plate recognition system, container code recognition system, under-vehicle inspection system, and manifest scanner
- **Radiation portal monitor** : gamma ray only or gamma/neutron detection
- **CIM Server networking solution** : enables images from one or more systems to be sent to a centralized database and connects one or more analyst workstations for local or remote image analysis

OPERATOR ALERT TOOLS

- **Transmission operator alert software** : identifies high-density anomalies

HTDS

Parc d'Activités du Moulin de Massy - 3 rue du Saule Trapu
 BP246 - 91882 Massy Cedex France
 Tel : +33 (0) 1 64 86 28 28 - Fax : +33 (0) 1 69 07 69 54 - info@htds.fr - www.htds.fr

HTDS Algeria: +213 232 384 01/02

HTDS Morocco: +212 222 749 59

HTDS Egypt: +202 229 053 06

HTDS Lybia: +218 91 69 50 70 8

HTDS Madagascar: +261 34 40 664 72

HTDS Tunisia: +216 70 836 961

