



## ORION 922CX RAPISCAN

HAND BAGGAGE AND LARGE PARCEL  
INSPECTION SYSTEM

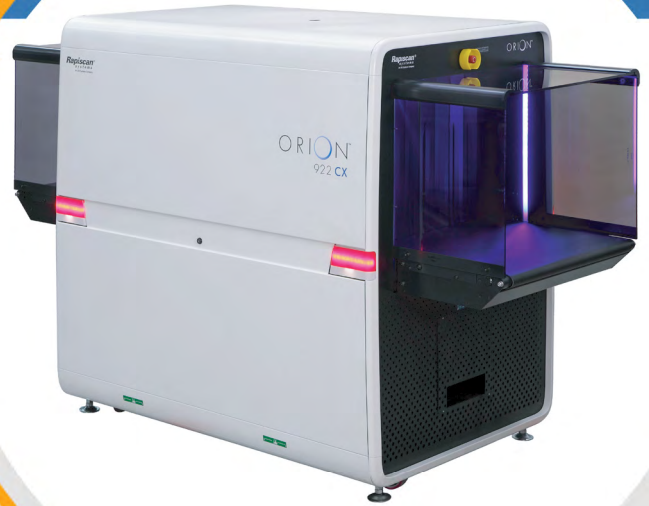
- INDUSTRY BEST WIRE & SPATIAL RESOLUTION
- EXPLOSIVES & NARCOTICS DETECTION
- LOW DENSITY IMAGE ENHANCEMENT
- MATRIXING ,NETWORKING & REMOTE VIEWING

### SPECTRUM 4-COLOR IMAGING

922CX can present images to the operator in the Classic 4-color and the new proprietary Spectrum 4-color (SP4) option providing superior image, allowing improved security by quick and accurate identification of threats and increase in throughput.

### DUAL MODE $Z_{EFF}$

This feature aids the operator in quick identification of organic materials, either in Range Mode which highlights areas based on operator selected Z-effective values of 7, 8 or 9, or in Interactive Mode which gives the operator the option to display the Z-effective number of a selected pixel.



TUNNEL OPENING (W X H):  
750 MM X 550 MM

THE NEW 922CX IS A HIGH PERFORMANCE 750MM BY 550MM TUNNEL CHECKPOINT SCREENING SYSTEM WITH BEST IN INDUSTRY RESOLUTION AND EXCELLENT THREAT DETECTION ALERT CAPABILITIES FOR LARGE CARRY-ON BAGGAGE AND PARCELS AT THE CHECKPOINT.

### EXPLOSIVES AND NARCOTICS DETECTION

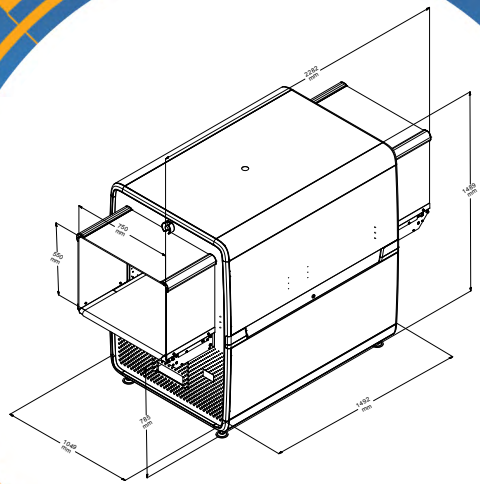
Target and NARCScan are designed to detect a wide range of explosives and narcotics respectively in real time during the scanning process by marking a potential threat on the X-ray image. Rapiscan® Systems detection algorithms are based on regulatory approved material analysis techniques.

### EUROPEAN AVIATION COMPLIANCE

922CX performance is in full compliance with the mandatory regulations (EC) No. 300/2008, (EC) implementing regulation 1998/2015 and update 815/2017, EC implementing decision 8005/2015 and update 3030/2017 for aviation security in the European Union.



# ORION 922CX RAPISCAN



## PHYSICAL SPECIFICATIONS <sup>1</sup>

Dimensions	L : 2,282 mm
	W : 1,049 mm
	H : 1,489 mm
Tunnel size	W : 750 mm
	H : 550 mm
Conveyor height	785 mm
Weight (net)	628 Kg

## ENVIRONMENT & POWER

Storage temperature	-20°C to 50°C
Operating temperature	0°C to 40°C
Relative humidity	5 to 95% non-condensing
System power	100/110/120/200/208 /220/230/240 VAC 310%

## PERFORMANCE <sup>2</sup>

Conveyor speed <sup>1</sup>	0.20 m/sec (39.4 ft/min)
Conveyor load <sup>1</sup>	165 Kg
Steel penetration	38 mm typical
	36 mm standard
Wire resolution	42 AWG typical
	40 AWG standard
Spatial resolution	0.8 mm vertical & horizontal

## HIGH SPEED OPTION

Conveyor speed <sup>1</sup>	0.35 m/sec (68.9 ft/min)
Steel penetration	31 mm typical
	30 mm standard
Wire resolution	38 AWG typical
	36 AWG standard
Spatial resolution	0.8 mm vertical & horizontal

## X-RAY GENERATOR

Anode voltage	160kV
Orientation	Diagonally upward

## KEY FEATURES AND OPTIONS

- Explosive threats, narcotics & density alerts
- Spectrum 4
- 17 Image processing functions
- SINERGY low density enhancement
- Dual Mode Z-effective
- CrystalClear™
- Automatic, Enhanced Image Archiving
- E.U. Approved Threat Image Projection
- Remote Status Monitoring
- Remote Archive Review
- Multi-System Alarm Resolution Network
- Multiplexing and Matrixing
- Tray Return System Compatible
- 13 Languages
- 64-bit Operating System

1. Approximate Values

2. Stated performance as measured by Rapiscan® Imaging Validation Test Kit

## HTDS

Parc d'Activités du Moulin de Massy - 3 rue du Saule Trapu  
BP246 - 91882 Massy Cedex France

Tel : +33 (0) 1 64 86 28 28 - Fax : +33 (0) 1 69 07 69 54 - info@htds.fr - www.htds.fr

HTDS Algeria : +213 232 384 01/02

HTDS Morocco : +212 222 749 59

HTDS Egypt : +202 229 053 06

HTDS Lybia : +218 91 69 50 70 8

HTDS Madagascar : +261 34 40 664 72

HTDS Tunisia : +216 70 836 961