

RS940-MI400

Data Sheet

NB개발담당

Legal Disclaimer

Information in this presentation is provided in connection with Seoul Viosys products and/or business operation. While Seoul Viosys has made every attempt to ensure that the information contained in this presentation has been obtained from reliable sources, Seoul Viosys is not responsible for any errors or omissions, or for the results obtained from the use of this information.

All information in this presentation is provided "as is" with no guarantee of completeness, accuracy, timeliness or of the results obtained from the use of this information, and without warranty of any kind, express or implied, including, but not limited to warranties of merchantability, performance, and fitness for a particular purpose, or any warranty otherwise arising out of any proposal, specification, or sample.

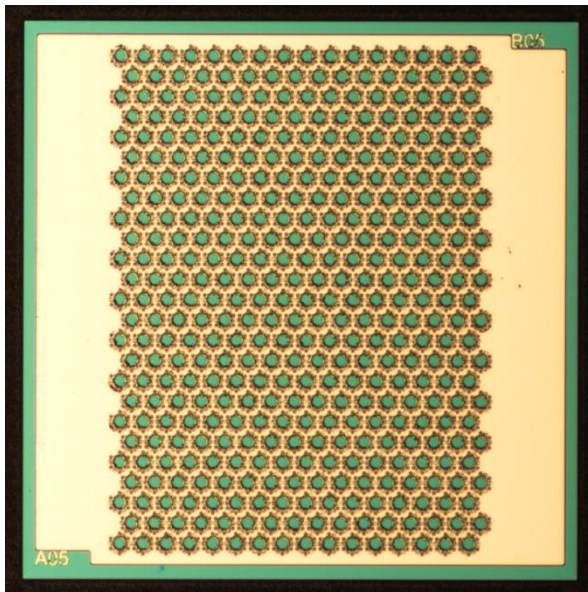
In no event will Seoul Viosys, its related corporations, or the employees thereof be liable to you or anyone else for any decision made or action taken in reliance on the information in this presentation or for any consequential, special or similar damages, even if advised of the possibility of such damages.

1. Chip dimensions

Unit : μm

Size : 850 x 850

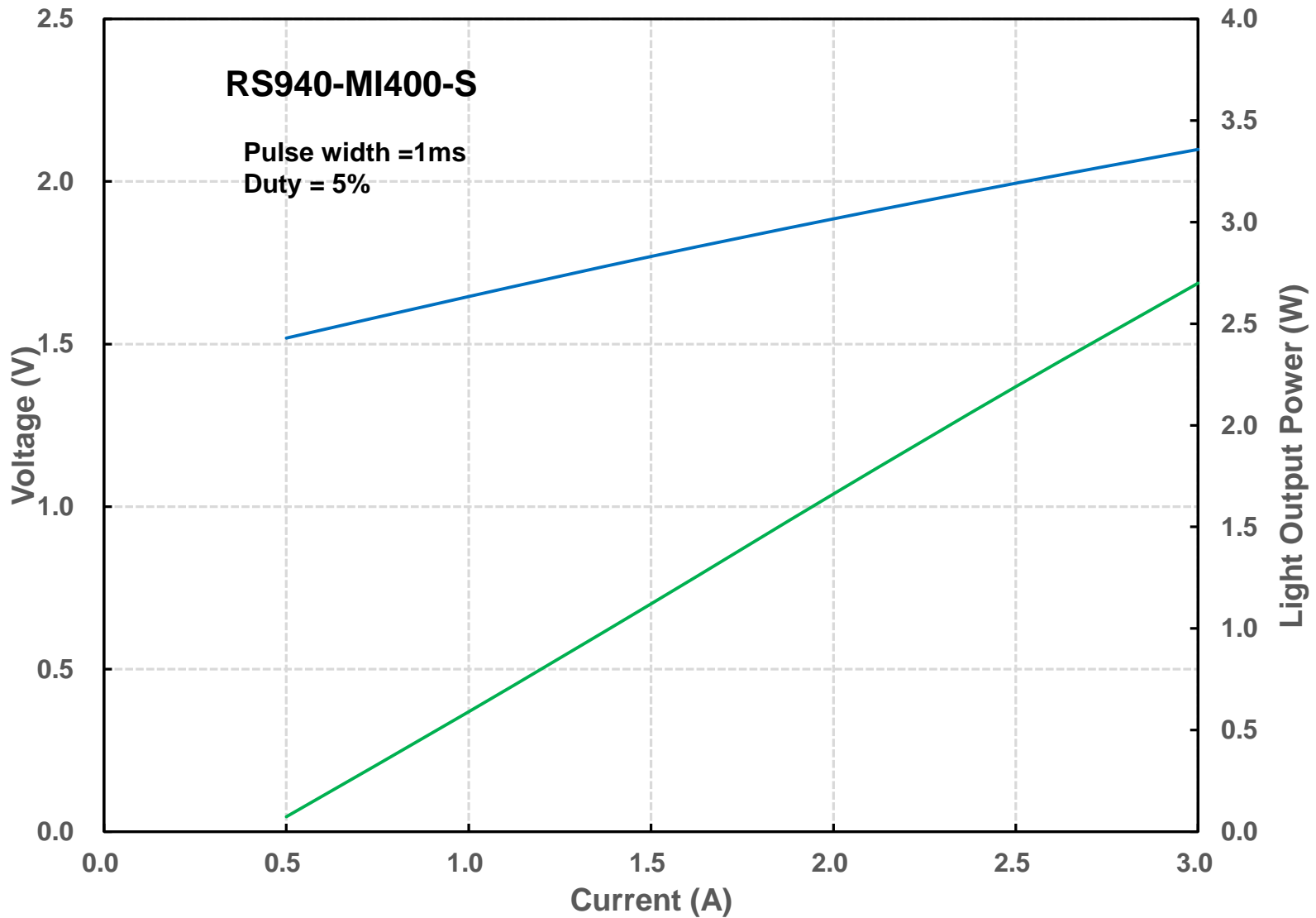
Chip : top side view



Cathode : backside

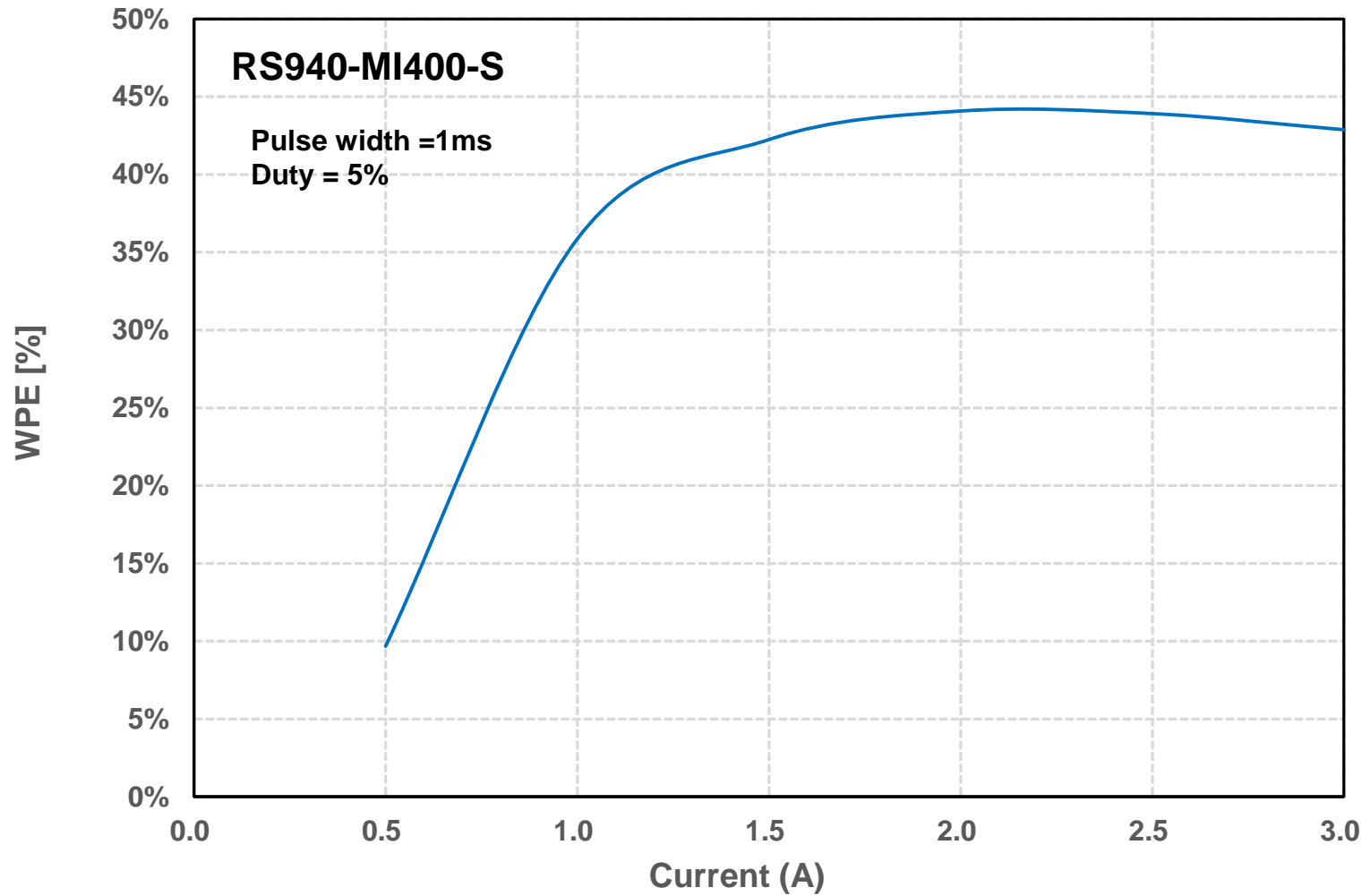
Thickness : $150 \pm 20 \mu\text{m}$

2. L-I-V (25°C)



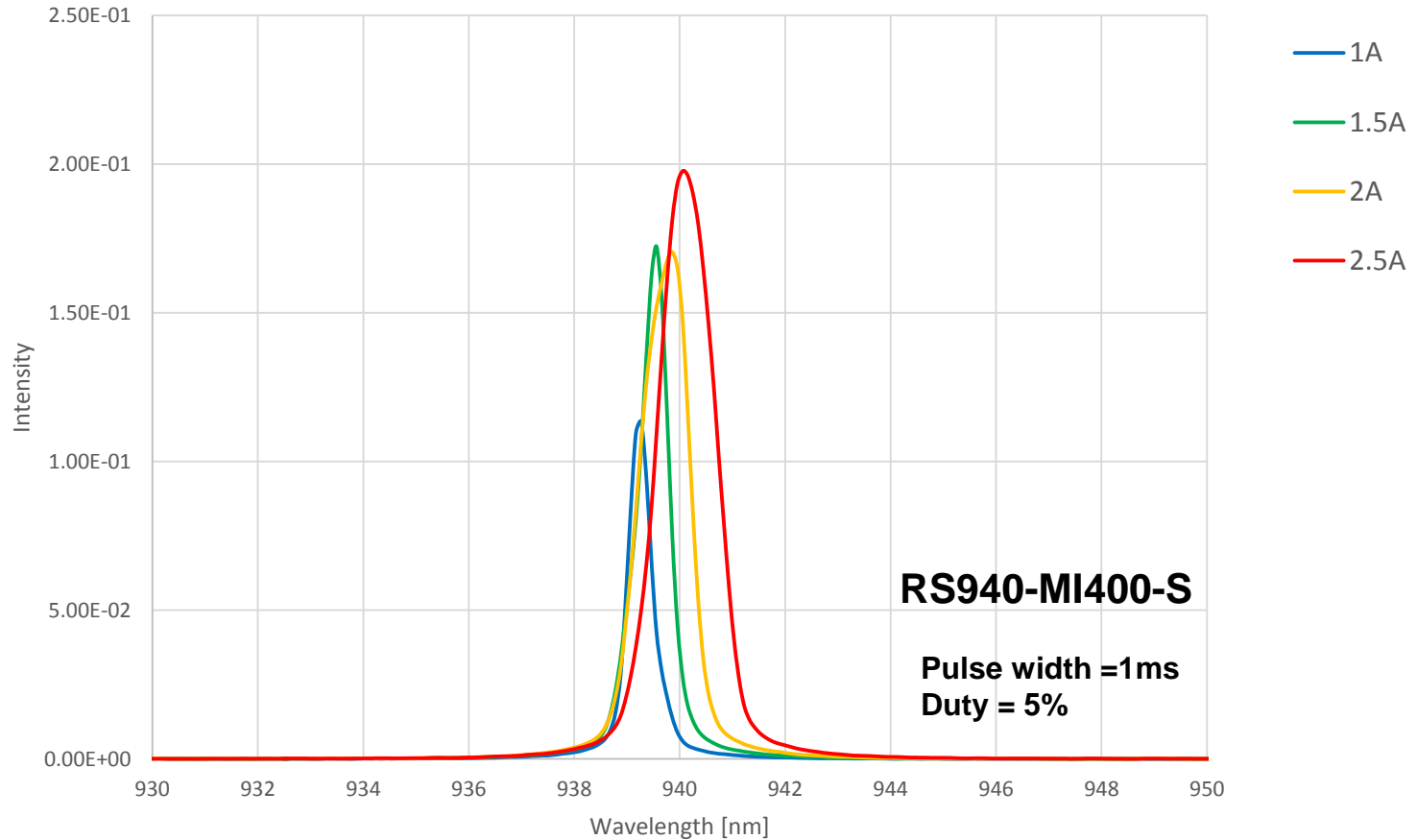
(T = 25°C unless otherwise stated)

3. WPE vs Current (25°C)



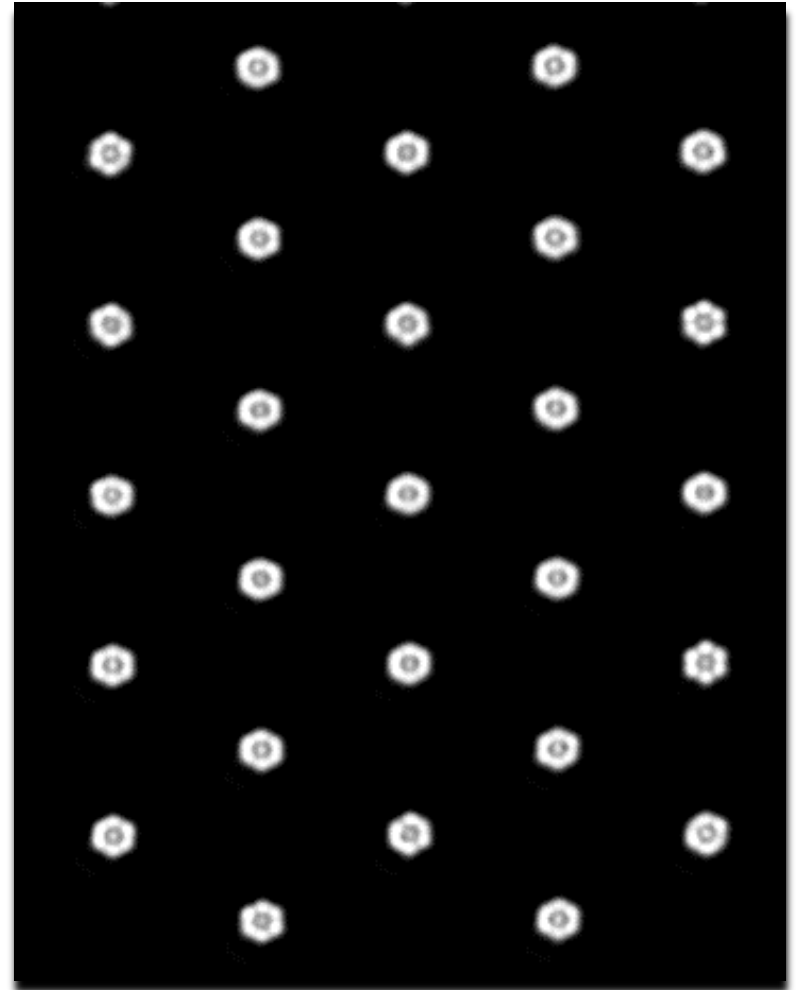
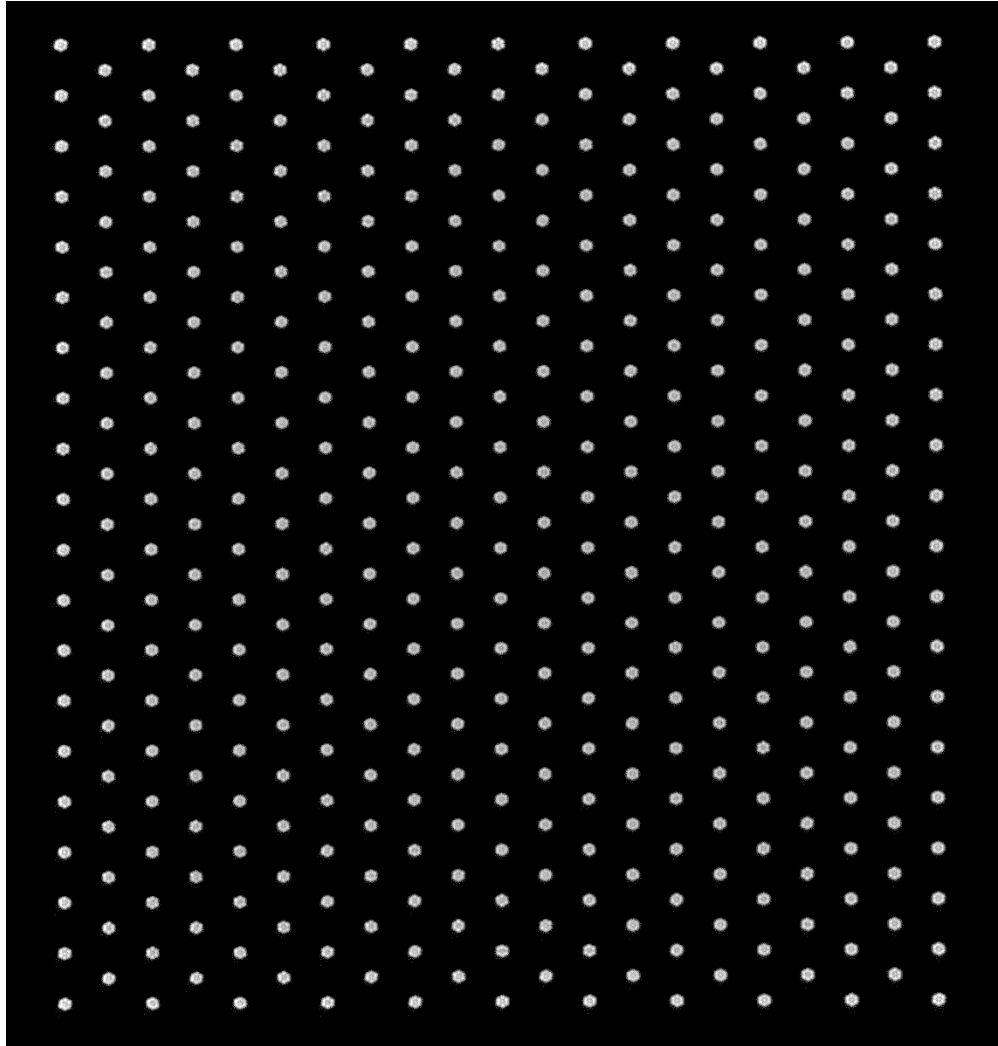
(T = 25°C unless otherwise stated)

4. Spectrum vs Current (25°C)



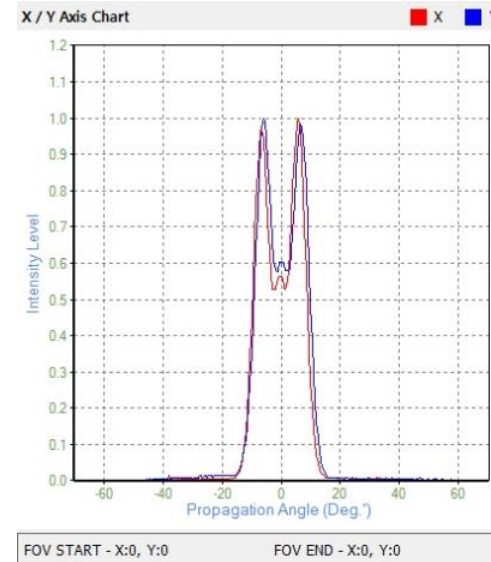
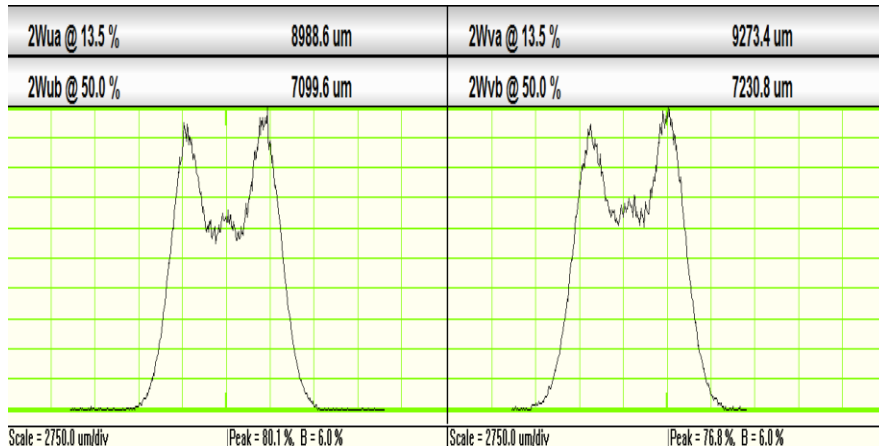
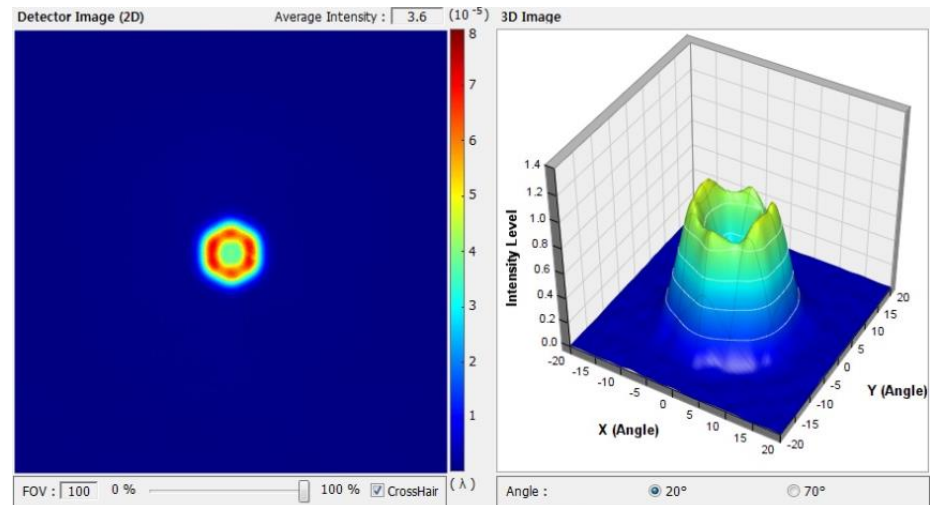
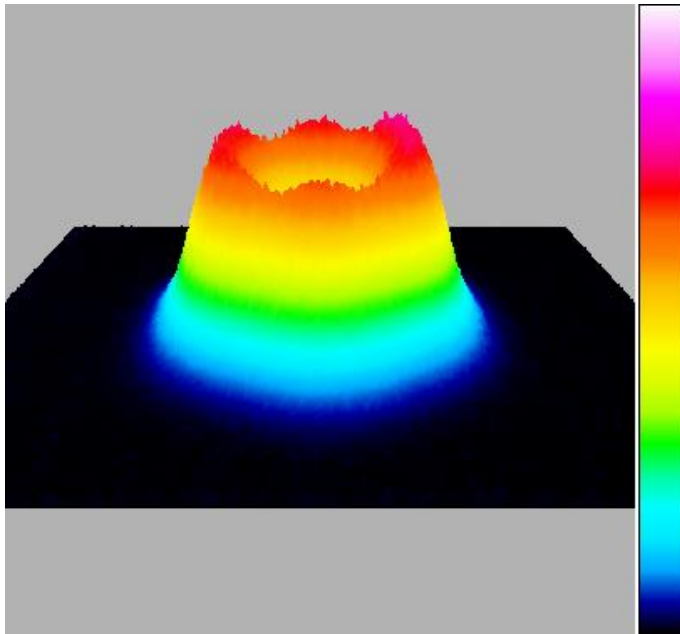
(T = 25°C unless otherwise stated)

5. Near-field (25°C)



($T = 25^{\circ}\text{C}$ unless otherwise stated)

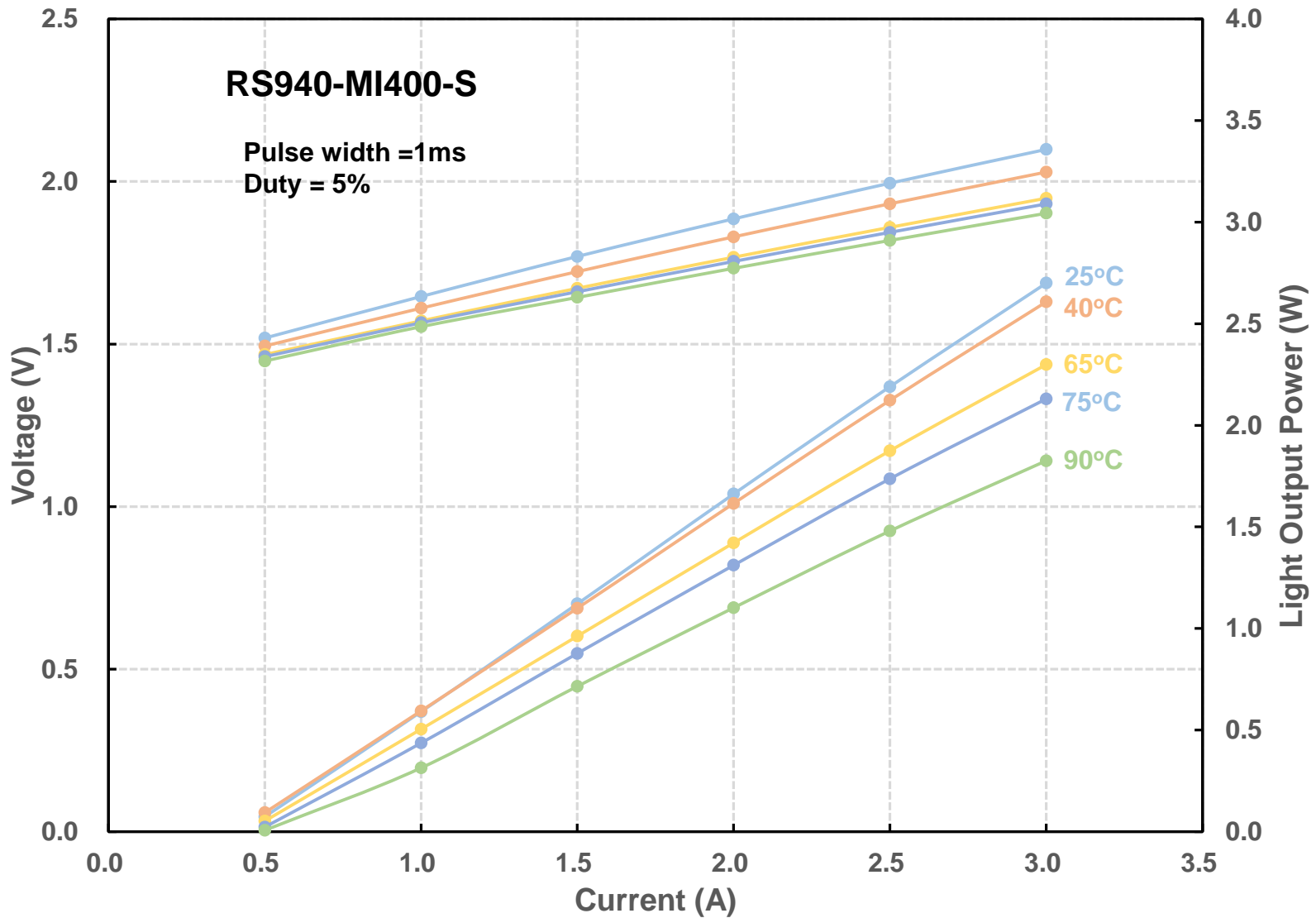
6. Far-field (25°C)



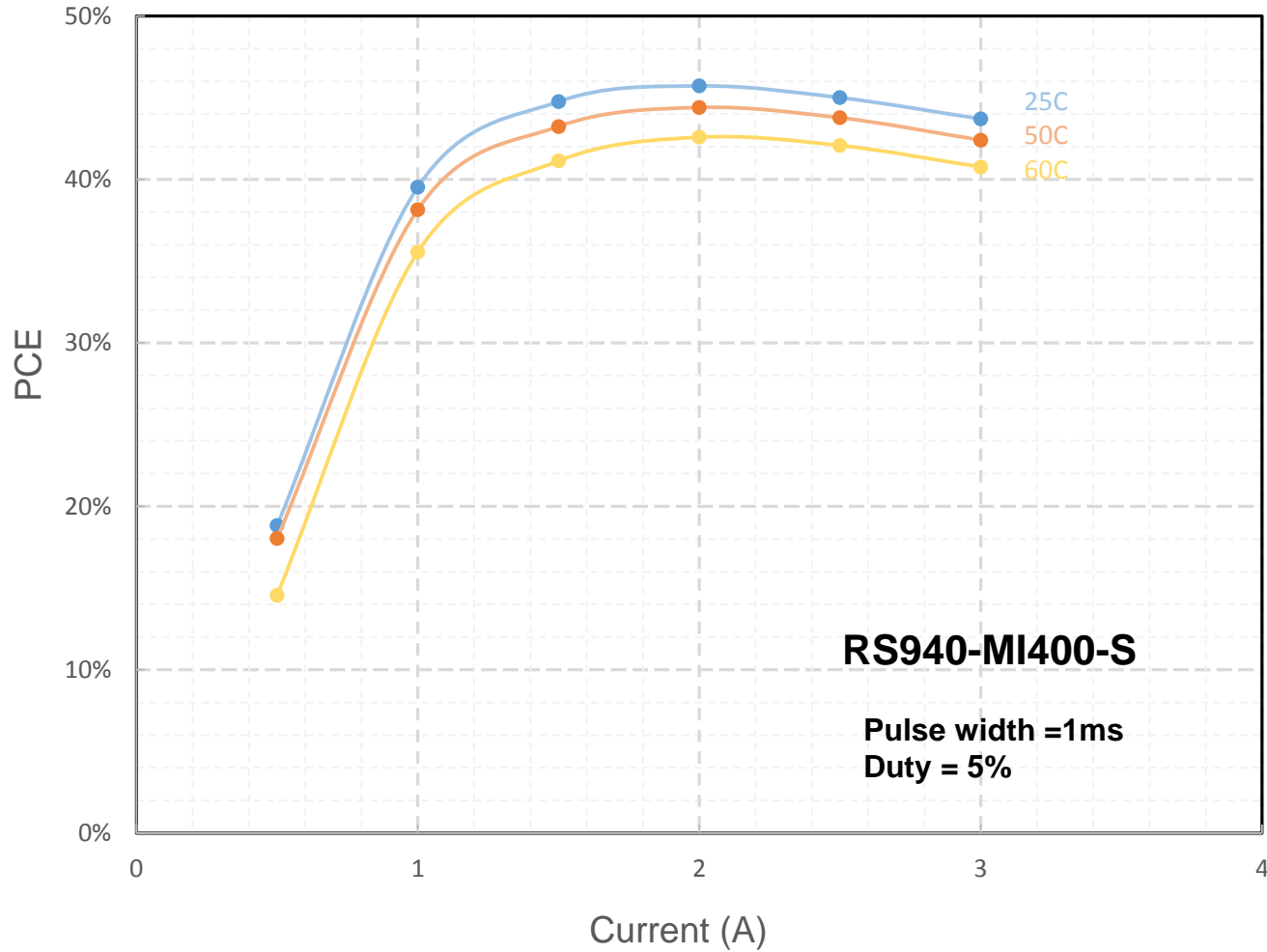
I_{op}=2.5A

(T = 25°C unless otherwise stated)

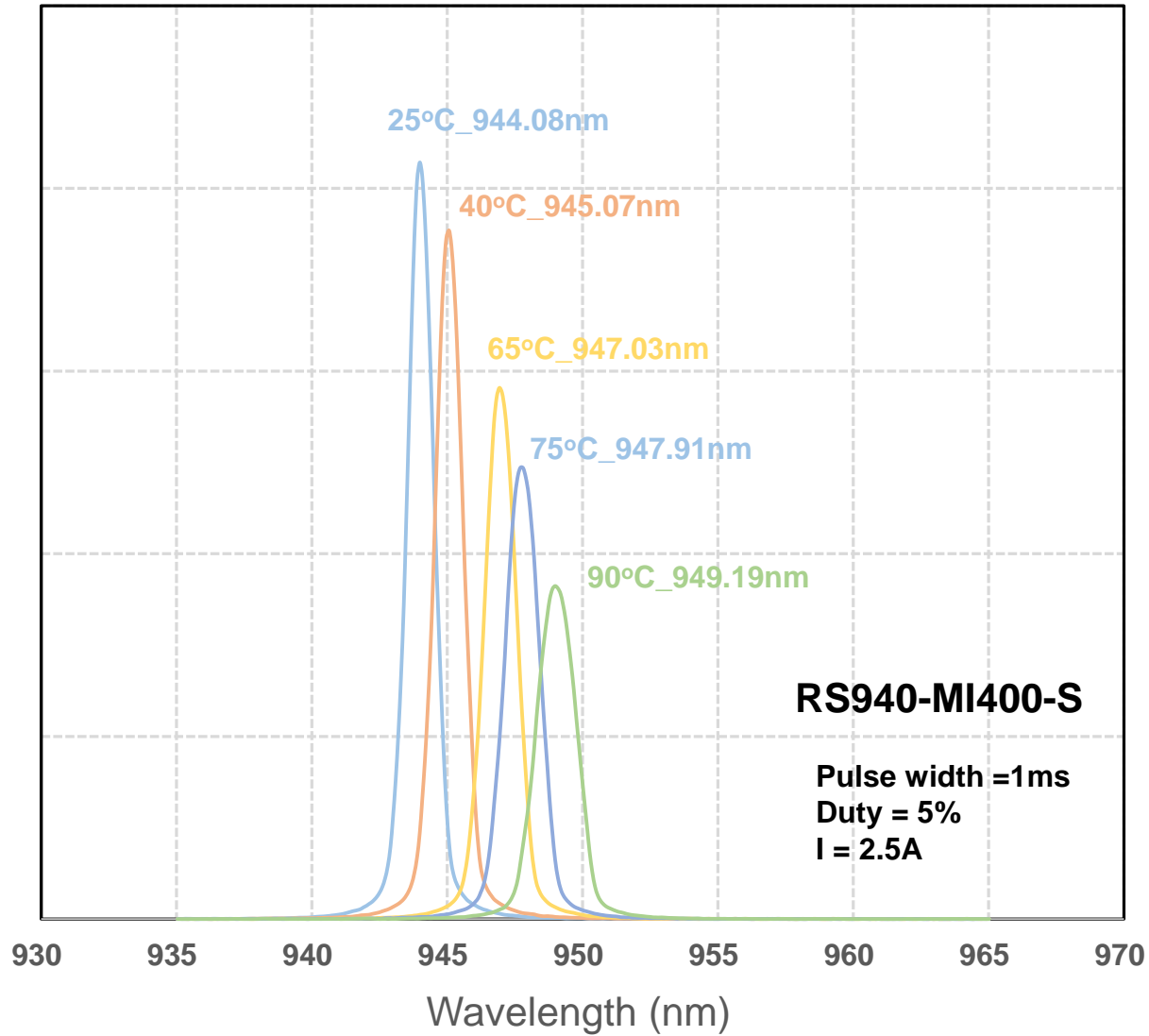
7. L-I-V vs Temperature



8. WPE vs Current (25, 50, 60°C)



9. Spectrum vs Temperature





THANK YOU!

www.seoulviosys.com